

Echos From the "BAT" Cave

Baltimore Area Turners

BALTIMORE AREA

TURNERS

October, 2014

Volume 9, Number 10

DAVID SMITH GOES ECCENTRIC



David Reed Smith regaled BAT with a fantastic demonstration of eccentric tree ornaments. With his customary attention to detail, all aspects of production were covered.

Four Members answered the October President's Challenge.

Frank Mataikis showed a clever box for his chuck.

(Right) Dave shows one of four variations he turned.

(Below left) the four variations.

(Below right) his 'presents' even had labels.

MORE INSIDE



Inside this issue:

Ironman Challenge	2
David Smith Demo	5
Custom Chuck Case	6
Other Stuff	7

2014 Officers:

President

Yaakov Bar Am

Vice President

Bob Pegram

Treasurer

Wayne Kuhn

Secretary / Newsletter

Richard Dietrich

Webmaster

Stephen Jones

Librarian

Clark Bixler

Public Relations

Yaakov Bar Am

Program

Director

Bob Pegram

Membership

Ron Ford



Visit us on the web at www.baltimoreareaturners.org

Susan Shane Ironman Challenge Standings (in alphabetical order)

		Ball	Wing	Skinny		
		Cup	Crotch	Bowl	Bat	Jewelry Total
Clark	Bixler	x			x	2
Richard	Dietrich	x	x	x	x	5
Ron	Ford	x	x	x	x	5
Greg	Ham	x			x	2
Douglas	Harris				x	1
Louis	Harris	x	x	x	x	5
Pete	Johnson		x	x		2
Wayne	Kuhn	x				1
Kenny	Leister	x				1
Larry	Maccherone	x	x	x	x	4
Dave	Maidt	x	x	x	x	4
Jim	Oliver	x				1
Bob	Pegram	x	x	x	x	4
Bob	Rupp	x		x		2
Roland	Shepard		x			1
Charles	Stackhouse	x	x	x	x	5



Some of the entries to the President's Challenge

PRESIDENT'S CHALLENGE

Four members brought turned jewelry. **Ron Ford** brought a bracelet of 5 woods he had turned between centers, **Louis Harris** brought a pin made of multiple woods. **Charles Stackhouse** brought a bangle turned of Wood 7. **Richard Dietrich** brought a Black Cherry crotch pendant. All discussed the techniques used to make the items

Catch up challenges: **Pete Johnson** brought a crotch bowl. **Clark Bixler** brought an Oak bat made 1/3 scale from a Rawlings bat. He also brought the pieces of his 'too skinny' bowl.

There's still time to catch up. Get those lathes spinning and face the challenges.



Clark Bixler (left) and Pete Johnson (right) catching up.



Ron Ford's bangle



Louis Harris' pin



Charles Stackhouse clasping bangle



Dave discusses the collet

DAVID SMITH DEMO



Tenon is cut precisely



Mounting the square stock

Long time BAT member, **David Reed Smith** demonstrated four varieties of eccentric Christmas Tree ornaments. All were mounted on 3 or 4 centers but were finished using different tools resulting in entirely different effects. One was decorated with 'ornaments' of shiny tape embossed into the wood with a brass punch with a recessed end. One had a 'present' glued to the base. 'Ribbon' was colored soft wire. To/From label was drawn on a CAD program and reduced before printing.

On to the turning: Trees were made of Home Depot poplar and held in plywood collets and supported by a soft stop in a live tailstock center. [Handouts](#), as well as a plethora of turning information, are available on [Dave's website](#). The square blank was mounted in the square collet. A 1 1/4" tenon was cut with a parting tool and caliper. The base was undercut, sanded and finished. The blank was mounted in a concentric round collet and shaped to tree form. A hole was

(Continued on Page 4)



Roughing tree form



Using skew to refine tree form



Mounting in the collet



Marking out lines

MORE TREES

(Continued from Page 3)

drilled in the top for the hanging wire. Lines for the cuts and 3 index points were marked out with pencil. The blank was then mounted in the eccentric collet at one of the index points. Using a skew, a [Shear Spear](#), or a parting tool, he cut into every third line. He then loosened the collet and rotated the blank to the next index point and, starting with the second line, cut every 3rd line. Again he loosened the collet, rotated and cut the final set of lines. At this point, the cuts could be decorated with paint or glue sprinkled with glitter. Finally, the blank was mounted again in the concentric collet and final cuts are made on the tree.

At this point, he demonstrated how to make hanging wires. He took 20g brass wire and twisted it into a spiral with a drill. (Thanks to **Pete Johnson** for providing the drill; Dave had forgotten his.) The spiral was bent into a gentle hook curve over a sharpie and the end glued into the hole at the top of the ornament.

He then made a textured tree. For this the square blank was

(Continued on Page 5)



Cutting the grooves (*left*) to make the finished tree (*right*)



Applying the Sorby texturing tool.



The textured tree.

TREES AND MORE

(Continued from Page 4)

mounted into a square tenon and the basic tree form was turned. It was then mounted in an eccentric collet with a star-shaped hole which allowed for easy indexing. The top of the tree was held in a soft stop. This was a 4-axis tree. He textured every other line on the 1st and 3rd axis and the ones in between on the 2nd and 4th axis.

Finally, he showed how he makes his soft center. He used 1" PVC rod, though wood could also be used. One end was drilled and tapped with 3/4" 10 TPI threads to fit the One-Way type live center. He mounted the piece on the live center and placed a roofing nail through it to lock it. He then drilled a hole for a Polyurethane insert and glued it in with CA. He finally dimpled and drilled the center. He uses hardness 60A available at [MSC](#).

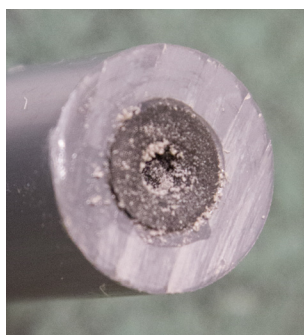
This was a fantastic demo. Dave covered all bases clearly and completely and answered numerous questions along the way. His demos always provide a wealth of information. As ever, thanks, Dave!



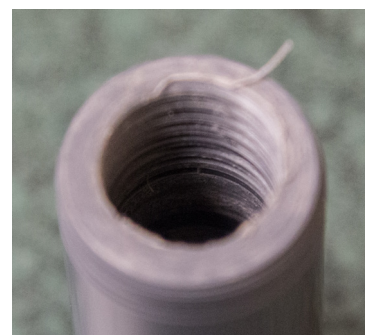
Truing the PVC for the soft center



The finished soft center



The soft end



The threaded end

ORNAMENTING THE TREES



David applies 'ornaments' to his trees by hitting a hollowed brass punch (*left*) against adhesive backed shiny paper (*right*).



Clockwise from above left: Top level of case; Lower level of case; Box for small parts, such as screws.

CUSTOM CHUCK CASE

Frank Mataitis had a problem. He wanted to store his Wood River chuck as well as other sets of jaws, including Cole jaws and knobs, a spindle adaptor, a worm screw, and various other wrenches and bars in a compact location. His solution? This amazing box, which he showed at the October meeting. These pictures show only the guts; the exterior of the box was gorgeous.





RAFFLE NEWS

Cypress, Spanish Cedar, Ambrosia blanks, a Walnut split, Sycamore splits and logs from an Official Maryland Big Tree, Epay pen blanks, a huge Craftsman socket set, and a Treewood crotch were donated by generous BAT members. Several Jimmy Clewes DVDs was also donated - they will be signed by Jimmy and kept in the library. Thanks to all.

BALTIMORE AREA TURNERS

Baltimore Area Turners meets every month on the second Wednesday of the month. (Except for the August picnic which is on a Sunday.) The next meeting will be held at the Boumi Temple at

5050 King Avenue
Baltimore, MD 21237-3325

Next meeting:
November 12, 2014 at 7:00 PM

Agenda: Jimmy Clewes demo
(There will be a \$10 charge for this demo.)



ELECTIONS COMING

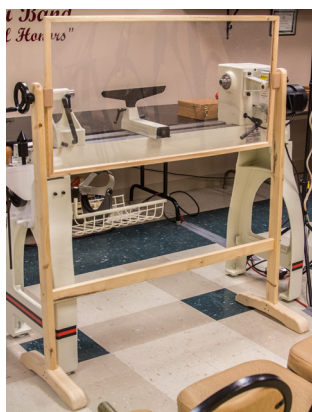
Board elections will be in November.

The following Slate will be presented:

President: Yaakov Bar Am
Vice President: Ron Ford
Secretary: Richard Dietrich
Treasurer: Wayne Kuhn
Librarian: Clark Bixler
Program Director: Ron Ford
Webmaster: [vacant]
Public Relations Director: Yaakov Bar Am
Membership Director: Ron Ford
At Large: Stan Dorman
At Large: Pete Johnson

Thanks to those who volunteered.
(We still need a WebMaster.)

LATHE SHIELD



You may have noticed a protective shield in front of the lathe at the October meeting.

Thanks to **Ron Ford** for constructing the shield.

PRESIDENT'S CHALLENGE

BAT President Yaakov Bar Am has announced the final President's Challenge for 2014:

December – Turn a Holiday Ornament

Remember - you have until the December meeting to turn in your make-up entries to the 2014 Susan Shane Ironman Challenge.