

# Echos From the "BAT" Cave

Baltimore Area Turners

BALTIMORE AREA



TURNERS

June, 2014

Volume 9, Number 6

*Inside this issue:*

Ironman Challenge	2
Show and Tell	4
Other Stuff	7

## IRONMAN AND SHOW AND TELL

BAT members filled the tables with items to Show and Tell about. (*right: some of the items presented*)

Members brought in Skinny Bowls for the third Presidential Challenge in addition to some make-up items from previous Presidential Challenges. (*lower left*)

The official Susan Shane Memorial Ironman President's Challenge plaque (*lower right*) was presented to BAT.



**2014 Officers:**

**President**

Yaakov Bar Am

**Vice President**

Bob Pegram

**Treasurer**

Wayne Kuhn

**Secretary /  
Newsletter**

Richard Dietrich

**Webmaster**

Stephen Jones

**Librarian**

Clark Bixler

**Public Relations**

Yaakov Bar Am

**Program**

**Director**

Bob Pegram

**Membership**

Ron Ford

**MORE INSIDE**



Visit us on the web at [www.baltimoreareaturners.org](http://www.baltimoreareaturners.org)



Bob Pegram shows big  
Black Cherry bowl



Larry Maccherone's Ash Bowl



Richard Dietrich shows small  
Black Cherry bowl

## IRONMAN CHALLENGE

In June nine BAT members entered into the third Presidential Challenge for this year's Susan Shane Memorial Ironman Challenge. The challenge was: "Getting Skinny for the Summer" Turn a Skinny Bowl from native wood: 6" or larger diameter, 3/16" or less wall thickness (not counting the foot).

**Bob Pegram** made a large Black Cherry bowl

**Larry Maccherone** made an Ash bowl

**Richard Dietrich** made a Black Cherry bowl

**Dave Maidt** showed a bowl of S&S Hard Rock Maple

**Ron Ford** showed a spalted Maple bowl

**Pete Johnson** showed two unsuccessful bowl attempts and a successful Maple bowl with an undercut rim.

*(Continued on Page 3)*



Dave Maidt used his increas-  
ingly rare S&S Hard Rock  
Maple



Ron Ford's spalted Maple  
bowl



## Susan Shane Memorial Iron Man Challenge Standings

(Listed in alphabetical order)

		Ball/Cup	WingCrotch	Bowl	Total
Clark	Bixler	x			1
Richard	Dietrich	x	x	x	3
Ron	Ford	x	x	x	3
Greg	Ham	x			1
Louis	Harris	x	x	x	3
Pete	Johnson			x	1
Wayne	Kuhn	x			1
Kenny	Leister	x			1
Larry	Maccherone	x	x	x	3
Dave	Maidt	x	x	x	3
Jim	Oliver	x			1
Bob	Pegram		x	x	2
Bob	Rupp	x		x	2
Roland	Shepard		x		1
Charles	Stackhouse	x	x	x	3

(Continued from Page 2)

**Louis Harris** made an Osage bowl with a Walnut base

**Bob Rupp** showed a spalted Maple bowl

**Charles Stackhouse** made an end-grain Walnut bowl.

There were make-up entries into the previous challenges:

One entry to the first challenge:

**Bob Rupp** made a cup and ball toy

One entry to the second challenge:

**Louis Harris** made a Maple crotch bowl

Thanks to all who took up the challenges. Give one a try! Develop your skills!



Pete Johnson shows his initial (*left*) and final (*right*) bowls

## MORE IRONMAN CHALLENGE



Louis Harris explains how a broken Osage tenon lead to a Walnut base



Bob Rupp's spalted Maple bowl



Charles Stackhouse's Walnut bowl



Ed Cohen's Banksia Bud vase



Charles Stackhouse shows Walnut plate



Don Schultz explains his remarkable pens



Lee Burkholder shows football inlaid pens

## SHOW AND TELL



Don Keefer's Sapele pendulum clock



Ron Ford's Holly and Wenge pair.



Jim Oliver shows Cherry platter

**Ed Cohen** showed a Banksia Pod Bud vase, saying it would be his last. He also showed a Mopani bowl.

**Charles Stackhouse** showed several excellent Walnut plates.

**Don Schultz** showed several amazing pens - Pheasant Feathers in acrylic, [Chyogami](#) paper in acrylic, pink dyed embossed leather and Pink Ivory (for breast care awareness).

**Lee Burkholder** showed two football inlay pens

**Don Keefer** showed an African Mahogany sculpture with a suspended medalion. He also showed a turned Sapele pendulum clock with a stained glass face. Works were from [Klockit](#).

**Ron Ford** showed a Wenge pepper grinder and Holly salt shaker pair. He also showed a spalted Beech box with a Walnut lid and Ebony finial.

**Jim Oliver** showed a Canary wood segmented bowl and a Cherry platter finished with four coats of water-based Poly and topped with Tung oil. He also showed an European Hornbeam split HF. He had filled with edge with epoxy and coffee grounds prior to sanding.

**Louis Harris** showed a lidded box made of Padouk and some of his last remaining S&S Maple.

**Larry Macherone** showed a Redbud bowl and told of his rescue after it blew up. The glued cracks are hardly visible.

**Dave Maidt** showed a Cherry Burl bowl made from the wood he won at last year's picnic. He also showed an Oak birdhouse and a clock turned from segments of Tree wood. He had fluted the pedestal with a Dremel in a jig using an indexing wheel.

**Stan Dorman** showed three bowls of spalted Cherry and lead a long discussion of form.

**Brian Chittum** showed a 'Road Kill Street wood' bowl. The group consensus was that this was spalted Oak.

There were many stories of saves. Thanks to all for sharing.

*(Continued on Page 5)*





Louis Harris shows  
Maple and Padouk box



Larry Maccherone shows  
resurrected Redbud bowl



Stan Dorman shows three spalted  
Cherry bowls

## MORE SHOW AND TELL

*(Continued from Page 4)*



Dave Maitt's  
Treewood clock



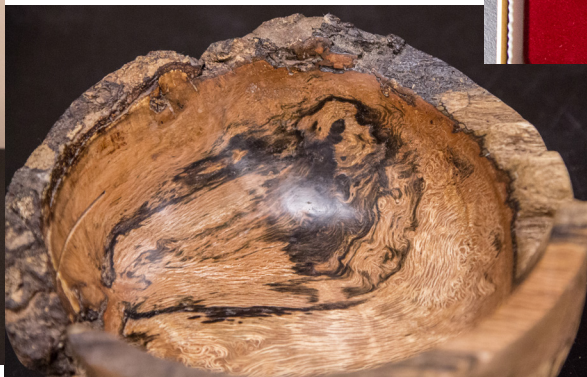
Brian Chittum shows  
'Road Kill wood' bowl.  
This beautiful wood (*be-  
low*) shows a bear face  
- can you find it?



Lee Burkholder's football  
pen (*above*) and Don  
Schultz' array of pens.  
(*below*)



Don Keefer's Sapele  
Clock and African Mahog-  
any sculpture







Larry Maccherone's Red-bud repair

Dave Maidt's Cherry Burl bowl

Jim Oliver's Canary wood segmented bowl

## MORE OF WHAT WAS SHOWN

### SUSAN SHANE MEMORIAL IRONMAN PLAQUE

Thanks to Pat Amtmann who engraved and constructed the Susan Shane Memorial Ironman President's Challenge Award plaque. Fantastic job !!!

For her efforts above and beyond the call of duty, the Board voted to award Pat free membership in BAT for 2015.



Pat Amtmann (*right*) watches as Wayne Kuhn (*left*) displays the plaque.

## RAFFLE NEWS



A truckload of Black Cherry logs and splits, Silver Maple logs, a block of TREX, Dogwood and Maple bowl blanks, Rosewood stick, Mulberry split, Maple blocks, Face Plates, Bubinga blocks, Walnut splits, River Birch logs, Ash and Chestnut splits, Spalted maple, beech, Walnut spindle blanks, a vacuum pump and more were generously donated by BAT members to the June Raffle. Thanks to all!

## BALTIMORE AREA TURNERS

Baltimore Area Turners meets every month on the second Wednesday of the month. The next meeting will be held at the Boumi Temple at

5050 King Avenue  
Baltimore, MD 21237-3325

Next meeting:  
July 9, 2014 at 7:00 PM

Agenda: Stihl Chain Saw Safety Demonstration



## SPECIAL RAFFLE

Cindy Drozda's Fabulous Finial, turned at the November meeting last year, and a demo lidded box (right) were raffled in a special raffle at the June meeting.

Congratulations to winner Richard Dietrich



## BAT LIBRARY NEWS

**Good News:** The BAT library has been computerized - faster check-in and check-out.

**Bad News:** We are still missing some videos. Please search your hiding places and return any BAT videos you might find so others can enjoy them.

## ELECTION'S COMING

The term of the current Board of Directors expires at the end of the year. We plan to hold an election for the new Board at the November, 2014 meeting. This should help the new Board to hit the ground running in January, 2015.

Any member may run for office. Details of the office responsibilities are in the [BAT By-Laws](#).

Consider serving. It doesn't take a lot of time and is mostly a lot of fun.

## PRESIDENT'S CHALLENGE

BAT President Yaakov Bar Am has announced the fourth President's Challenge for 2014:

**August** – Turn a scale model Baseball Bat. As large as can fit on your lathe between 12"-36" of Hickory, Ash or Maple. (MLB Standard: <=42" long, <=2.75" max diameter, of one piece of solid wood.)