

Echos From the "BAT" Cave

Baltimore Area Turners

BALTIMORE AREA

TURNERS

May, 2014

Volume 9, Number 5

Inside this issue:

Joe Dickey Demo	2
Field Trip	4
Other Stuff	7

2014 Officers:

President
Yaakov Bar Am
Vice President
Bob Pegram
Treasurer
Wayne Kuhn
Secretary / Newsletter
Richard Dietrich
Webmaster
Stephen Jones
Librarian
Clark Bixler
Public Relations
Yaakov Bar Am
Program Director
Bob Pegram
Membership
Ron Ford

MORE INSIDE

JOE DICKEY DEMO AND FIELD TRIP



Joe Dickey ably discussed form at the May BAT meeting. (Above - photo by Laurie Kellum). Warren Carpenter's second demo piece from March (below left - photo by Clark Bixler) was raffled in a special raffle. BAT went on a field trip to see wondrous things. (below right)



Thanks to **Laurie Kellum** and **Clark Bixler** who took time out of their busy lives to answer the Secretary's Challenge by providing material for this Newsletter.





Photo by Laurie Kellum



Photo by Laurie Kellum

JOE DICKEY DEMO



Photo by Laurie Kellum

Long time Maryland Hall turner, [Joe Dickey](#) brought his 30 years of turning experience to BAT to discuss form. The retired JHU physicist started with a mathematical approach: the Golden Ratio (1:1.618034), which he explained in detail. He also gave instructions for Golden Ratio calipers, which are on Page 4.

He recommended making the base of a turning small to avoid making pieces that look like a dog dish. He described a technique using a spray foam that hardens and supports inlays that extend past the actual bowl, such as "Solstice II." (Left and lower left)

He said he likes to use interesting looking wood and will spalt his own woods like Maple, Ash, or Holly by

(Continued on Page 3)



Photo by Clark Bixler

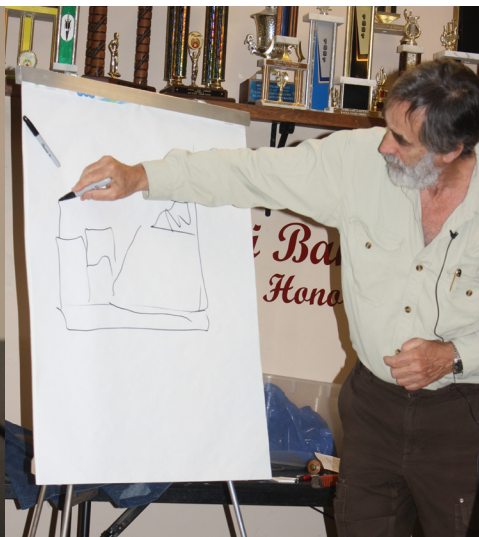


Photo by Laurie Kellum

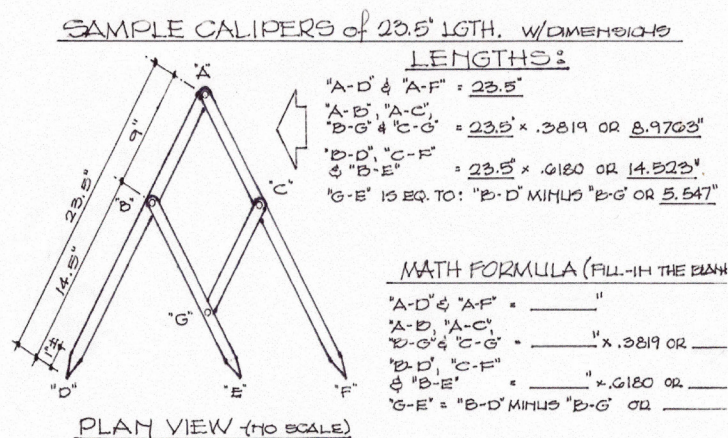


Photo by Laurie Kellum



Golden Ratio Calipers (above) and
Joe's Plan (Right)

Photo by Clark Bixler



MORE JOE DICKEY

(Continued from Page 2)

putting the cut blank in a dark trash bag for a year.

For finishing, he prefers shellac applied on the lathe. He sands to 320 then applies 7-12 coats of shellac, lightly sanding between coats as needed. One coat of varnish is applied at the end. He also uses Danish Oil for finishing.

"If there is no possible use, it must be art."

[This sounds like it was a great demo. Sorry I missed it. Thanks to Laurie Kellum for providing this summary. RLD]



Photo by Laurie Kellum

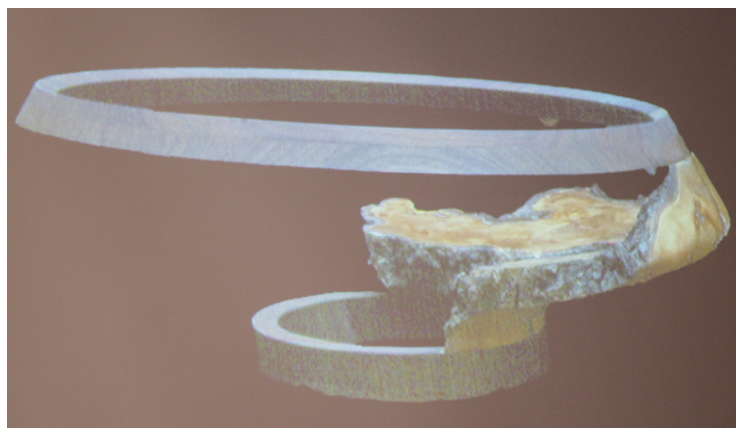
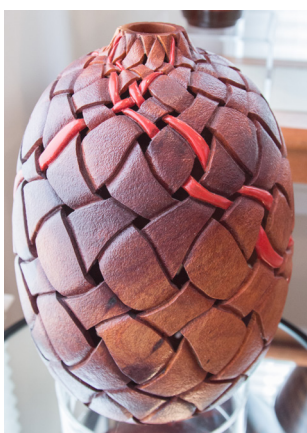


Photo by Laurie Kellum



A VISIT TO THE BERNSTEINS

For the second time in 3 years, Dr. Jeffrey Bernstein (*pictured upper left*) and his wife, Dr. Judith Chernoff, opened their North Laurel home to members of BAT.

Their entire home abounds with turnings by a veritable Who's Who of accomplished turners.

Each piece has a story, many of which our hosts shared with us as we viewed and handled their works.

Thank you, Drs. Bernstein and Chernoff, for sharing with us.

Here is a small sampling of works we saw.





MORE BERNSTEIN COLLECTION

(Continued from Page 4)





(Even the toothpicks were turned.)

STILL MORE BERNSTEIN COLLECTION



Zoom in on these photos to see the exquisite detail.



(They also collect woven baskets.)



RAFFLE NEWS

Lots of pieces of wood were generously donated by BAT members to the May Raffle. Thanks to all!

Special thanks to Laurie Kellum for Raffle photos.

BALTIMORE AREA TURNERS

Baltimore Area Turners meets every month on the second Wednesday of the month. The next meeting will be held at the Boumi Temple at

5050 King Avenue
Baltimore, MD 21237-3325

Next meeting:
June 11, 2014 at 7:00 PM

Agenda: Show and Tell / President's Challenge



SPECIAL RAFFLE

Warren Carpenter completed, sanded, finished and signed the Cherry crotch bowl he started at his March BAT demo and generously donated it to BAT.

It was raffled off in a special raffle at the May meeting.

Congratulations to winner Laurie Kellum (*right - photo by Clark Bixler*)



PRESIDENT'S CHALLENGE

BAT President Yaakov Bar Am has announced the third President's Challenge for 2014:

June – "Getting Skinny for the Summer"
Turn a Skinny Bowl from native wood: 6" or larger diameter, 3/16" or less wall thickness (not counting the foot).