

Echos From the "BAT" Cave

Baltimore Area Turners

BALTIMORE AREA

TURNERS

February, 2013

Volume 8, Number 2

SPINDLES AND ACC



BAT member Louie Harris (*above left*) gave an excellent overview of spindle turning techniques using five different tools (*above right*). Later in the month, eight other BAT members took turns demonstrating at the American Craft Council Show. (*Below*) BAT Treasurer Wayne Kuhn keeps a large audience captivated while he turns a weed pot bud vase.

MORE INSIDE



Inside this issue:

Spindle demo	2
Tips & Tricks	3
ACC Show	4
Other Stuff	6

2013 Officers:

President

Yaakov Bar Am

Vice President

Bob Pegram

Treasurer

Wayne Kuhn

Secretary / Newsletter

Richard Dietrich

Webmaster

Stephen Jones

Librarian

Clark Bixler

Public Relations

Yaakov Bar Am

Program

Director

Bob Pegram





Showing safe drive centers.



Spindle roughing gouge roughing spindle.

SPINDLE TURNING DEMO



Testing for roundness



Line cut (*above*), V cut (*below*) with skew.

Louie began his demo with discussions of lathe safety. (Rule #1 - No Blood) He used a split 2x4 to demonstrate. After finding the center of the spindle, he mounted it between centers, preferring drive centers which slip with catches, such as the [Steb center](#), over the standard spur drive that came with the lathe. He uses a drive extender to allow easy access to the headstock end of the wood. He uses a [Robust tool rest](#) rather



Rolling a bead with a spindle gouge . . .

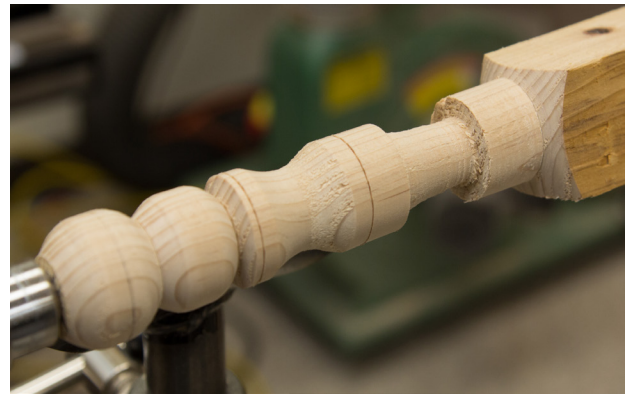
*continued
on Page 3*



. . . and with a skew.



Making a pommel cut



The finished demo piece

SPINDLE DEMO

than the stock tool rest.

He used the spindle roughing gouge for its single purpose: to make wood round. Resting the tool on the tool rest, rubbing the bevel, and lifting the handle, he proceeded to demonstrate a planing cut with the spindle gouge. He adjusted the tool rest for each different type of tool he used.

He switched to the skew chisel which was used for most of the rest of the demo. He sharpens it on a Sorby belt sharpener and hones it with a diamond hone. He said it is the best tool for planing which means less sanding.

He demonstrated the line cut and the V cut. Then he rolled beads, starting at the edge and taking

serial cuts toward the center. He used the spindle gouge to turn some beads and also some coves.

He then demonstrated square and curved pommel cuts with the skew chisel. He used a parting tool to make dimensional cuts.

He recommended Mike Darlow's DVD, '[The Taming of the Skew](#).' He also mentioned that [Mark Supik](#) can give lessons in spindle turning.

Finally, he discussed other skews, the oval skew, the round skew, and the vortex tool (which he makes by sharpening a 3/8" [Thompson](#) Steel rod like a pencil with a 25 degree bevel and grinds a 15 degree flat on one side.)

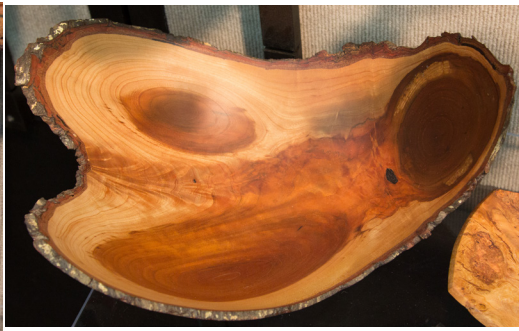
TIPS AND TRICKS

An idea occurred to me at our last meeting during a discussion of the removal of sanding scratches. Unfinished wood, no matter how well sanded, simply doesn't reflect light very well, and as a result, sanding scratches or even tool marks can escape detection after initial sanding. I expect that I'm not the only turner to have sanded a piece to what seemed to be a satisfactory smoothness, applied a couple coats of finish, and realized that the job wasn't satisfactory at all. By this time the piece is off the lathe, the tenon may have been removed, and an unappealing session of hand sanding looms. I tried an experiment wherein a small plate was sanded on the lathe through 400 grit, wiped clean and examined. Then, with the lathe running at a reasonably high speed, a coat of **friction polish** was applied in the conventional way. The friction polish quickly provided enough gloss that residual scratches could much more easily be easily seen, and seen in enough detail that it was possible to estimate at what grit additional sanding should be begun, if in fact any was necessary.

Jim Oliver

When turning a tapered spindle, such as a table leg or baseball bat, adjust the edge of the toolrest to match the desired taper of the piece.

Louie Harris



Some of the pieces displayed by [Warren Carpenter](#)

ACC SHOW

It was colossal, it was stupendous, it was breath-taking. The 2013 ACC show featured acres of eye-popping jewelry, textiles, furniture, wood art, ceramics, glass and more. BAT's own Keith Holt was one exhibitor.

In the midst of all this wonder were local demonstrators. BAT was there demonstrating. Also, folks from the Art Glass Center at Glen Echo worked pieces of glass into art, ceramics were made by Baltimore Clayworks, the Weavers Guild of Greater Baltimore spun yarn and wove it into cloth, and the Towson University Metalsmithing and Jewelry Program scanned people and 3-D printed busts of them on the premises.

Thanks to BAT members Dave Mardt, Jim Oliver, Don Keefer, Bob Pegram, Wayne Kuhn, Richard Dietrich, Chuck Cohen and Don Schultz for agreeing to demonstrate various facets of turning to the ACC show audience.



Two imaginative pieces by [S. Ashley Murphy](#)



continued on page 5



[Jerry Kermode](#) was sad that his demo at Mark Supik's had been cancelled due to a power failure.



Some of Jerry's bowls.



(above and below)
Hollow forms by
[Gordon Browning](#)
(Note the round
bottom above.)

Zoom in on these photos
to see the exquisite detail.

MORE ACC SIGHTS

(Continued from Page 4)



A familiar trio by [Keith Holt](#)



Keith's famous [Sphere Within a Sphere](#)



Turned and carved forms by Keith.





RAFFLE NEWS

An Ash baseball bat blank, an Oak round, Maple and hickory splits, and Holly and 'bush' stems were raffled at the February meeting. Bad weather lead to a smaller than usual turnout. Thanks to all who donated!

BALTIMORE AREA TURNERS

Baltimore Area Turners meets every month on the second Wednesday of the month. The next three meetings will be held at the Jewish Community Center at

5700 Park Heights Avenue
Baltimore, MD 21215
410-542-4900

Next meeting:
March 13, 2013 at 6:30 PM

Agenda: Show and Tell (President's Challenge)



Don't forget to bring items to raffle.

MEETING RELOCATION

As noted below, we will be meeting at the Jewish Community Center for the next three months. The March meeting will be in the JEA room.

This should be a temporary relocation and we hope to be returning to Woodcraft later in the year.

SUSAN SHANE MEMORIAL IRONMAN COMPETITION

This year we are inaugurating a new event.

To participate in the Susan Shane Memorial Ironman Competition all you need to do is participate in the President's Challenge. Each participation awards one point. There will be multiple President's Challenges throughout the year. The person who accrues the most points at the end of the year will be rewarded. In case of a tie, all winners will be rewarded. We hope that folks will put forth their best effort into each challenge and we look forward to seeing the results.

(The term 'Ironman' is not intended to imply that participation has anything to do with gender. As Susan would have said, "Women can be Ironmen, too.")

PRESIDENT'S CHALLENGE

BAT President Yaakov Bar Am has announced this year's first President's Challenge:

March - Turn two goblets that look identical in size and shape.